

# NetCD

a CDDb-savvy audio CD player  
by Toby W. Rush

- About NetCD* NetCD is a CD player utility for the Mac OS. NetCD can retrieve CD information from the CDDb internet database or from user input and can store information on the hard disk in the CD Remote Programs file, the same file used by Apple's CD Remote and AppleCD Audio Player utilities. NetCD is System 7 and OS 8 compatible, Appearance Manager compliant, supports Balloon Help and Contextual Menus, and works with both ATAPI and non-ATAPI CD-ROM drives.
- Requirements* To use NetCD, you must have a Mac OS Computer with a 68040 processor or better and a CD-ROM drive. To use the internet features, you must have Open Transport installed on your computer with either a modem or a direct internet connection. Because I am not able to foresee every possible combination of CD-ROM drives, computers and system software, your results may vary.
- Installing NetCD* If you have received NetCD as a compressed archive, double-click the archive to decompress the program. If you would like NetCD to appear in your Apple menu, place the program or an alias to it in the Apple Menu Items folder in your System folder.
- CD Remote Programs and NetCD Extra Data* When NetCD is set to record CD program information to your hard disk, it places this information in a file called CD Remote Programs. This file is located in the Preferences folder in your System folder. CD Remote Programs is used by other audio CD programs such as CD Remote and AppleCD Audio Player. If you have entered other CD information using these programs, you might want to make a backup copy of this file before using NetCD.
- NetCD also uses a second file in your preferences folder, NetCD Extra Data, to store extra information about the disc and individual tracks. This file is not used by other programs such as AppleCD Audio Player.
- Modem Connections* If you use a modem to connect to the internet, you must have Open Transport and a PPP or SLIP connection to use NetCD. These protocols create a virtual "direct connection" to the internet over your modem. As with most internet-based programs on the Macintosh, NetCD will automatically start your PPP or SLIP connection when it needs to connect to the internet. Like other programs, it does not terminate the connection when done, but leaves it open for subsequent use.

*Starting NetCD  
for the First Time*

To use NetCD, double-click on the program's icon. If you have placed NetCD or an alias to it in the Apple Menu Items folder, you can start NetCD by choosing it from the Apple Menu.

**Get Titles from Internet:**

☐ Never

☒ Only On Command

☐ For Unknown Discs

☐ For All Discs

☒ Save Titles after Download

**Server:**

Fremont, CA US

Select New Server...

**Connection:**

Retry idle connections  
after 10 seconds

**E-mail Information:**

E-mail Address: mcfly@hillvalley.net

SMTP server: hillvalley.net

**Options:**

☐ Autoplay Audio CDs

☐ Connect using HTTP

☐ Use Proxy:

Use this dialog box to specify how you want NetCD to connect to the internet.

Cancel OK

Figure 1: The Preferences Dialog Box.

When you open NetCD for the first time, the Preferences dialog box appears. Before using NetCD, you must decide when you want NetCD to connect to the internet, and provide it with some information concerning the connection.

1. *Choose when you want to connect to the internet.* NetCD allows you to specify the circumstances under which the program should connect to the internet to retrieve CD information. You can choose one of the options on the left side of the preferences dialog box, each of which is described below:

*Never.* If you select Never, NetCD will not connect to the internet for CD information. Use this option if you do not have an internet connection, or do not wish to use NetCD's internet capabilities.

*Only On Command.* If you select this option, the Connect button in the main window will be enabled and NetCD will download CD information from the internet only when you click the Connect button.

*For Unknown Discs.* If you select this option, NetCD will always check the CD Remote Programs file first to identify a CD. If there is no information in that file for the CD, NetCD will retrieve information from the internet and display it.

*For All Discs.* If you select For All Discs, NetCD will download information from the internet for every disc, even if that disc has been played previously.

If you choose one of the last three options, you can specify whether or not you want NetCD to save downloaded information to your CD Remote Programs file. If you want to save this information immediately after it has been downloaded, make sure Save Titles after Download is checked. If this option is not selected, NetCD will not save the downloaded information unless it is subsequently edited.

As an example, on my computer at work, where I have a direct connection to the internet, I use For Unknown Discs and Save Titles After Download. This way, when NetCD finds a disc it does not recognize, it quietly checks the internet for the information and saves it so it doesn't have to check it again. On my home computer, where I use a modem to connect to the internet, I use Only On Command, so that NetCD doesn't tie up the phone line without my permission. (Hmm... how about NetTeenager?)

*If you chose Never in step 1, you can skip steps 2 and 3, since they apply only to internet connections.*

2. *Choose a CDDDB server.* NetCD connects to a CDDDB server to retrieve CD program information. There are CDDDB servers all over the world, with new ones added periodically. To choose a server, click Select New Server.

When you click Select New Server, NetCD opens the internet connection and downloads the current list of servers from which you can choose. After it has retrieved this list, NetCD displays the list in a separate dialog box. Select a server that is geographically near your location and click OK. The location of the new server is displayed above the Select New Server button.

For advanced users: Holding down the Option key while you click Select New Server allows you to choose a CDDDB server without downloading the list of current servers. You must know the address and port of the server in order to use this method, and it is only intended for users who have trouble connecting to the main CDDDB server to retrieve the list of server sites.

3. *Enter your e-mail address and SMTP server.* When NetCD connects to the CDDb server, it needs to submit your e-mail address to log in. Your e-mail address is kept completely private and is used only as identification, and it helps the people who operate the CDDb servers know better who is using this free service.

If your SMTP server is different than the one in your e-mail address, you can enter it in the SMTP server field. If you are unsure of what your SMTP server is, consult your system administrator.

4. *Change the connection timeout period, if necessary.* When NetCD is connecting to a server, it keeps track of how long it has been waiting for a reply. If, after a certain amount of time, there has been no answer, NetCD will try the connection again. You can select how long NetCD waits in by entering a number of seconds in the connection timeout field. If you have a slow modem connection, enter a higher number here to give NetCD more leeway. If you have a fast connection, enter a smaller number here to increase connection speeds.

5. *Select Connect Using HTTP if necessary.* If your computer is connected to the Internet through a proxy server or firewall, you may need to use HTTP in order to connect to the CDDb servers. If you are unsure about your Internet connection, contact your system administrator.

If you connect to the Internet using a proxy server, select Use Proxy and enter the name of your proxy server. If you are unsure of the name of your proxy server, consult your system administrator.

6. *Choose Autoplay Audio CDs if desired.* If you select this option, NetCD will automatically begin playing an audio CD as soon as it is inserted into the CD-ROM drive. Note that this feature works only for Audio CDs, and has no effect on data CD-ROMs.

7. *Click OK to confirm your choices.* If you missed a step, NetCD will ask you to make the required choice. Once you click OK, your preferences are saved and you will not need to enter your preferences again unless you wish to change them.

### *The Main Window*

NetCD's main window is shown in figure 2. Since NetCD is Appearance Manager-compliant, the colors of the controls and window may be different depending on the appearance settings for your computer.

If you do not see the whole window, click the disclosure triangle at the left of the volume slider to show the lower part of the window. The controls in the window are explained below.

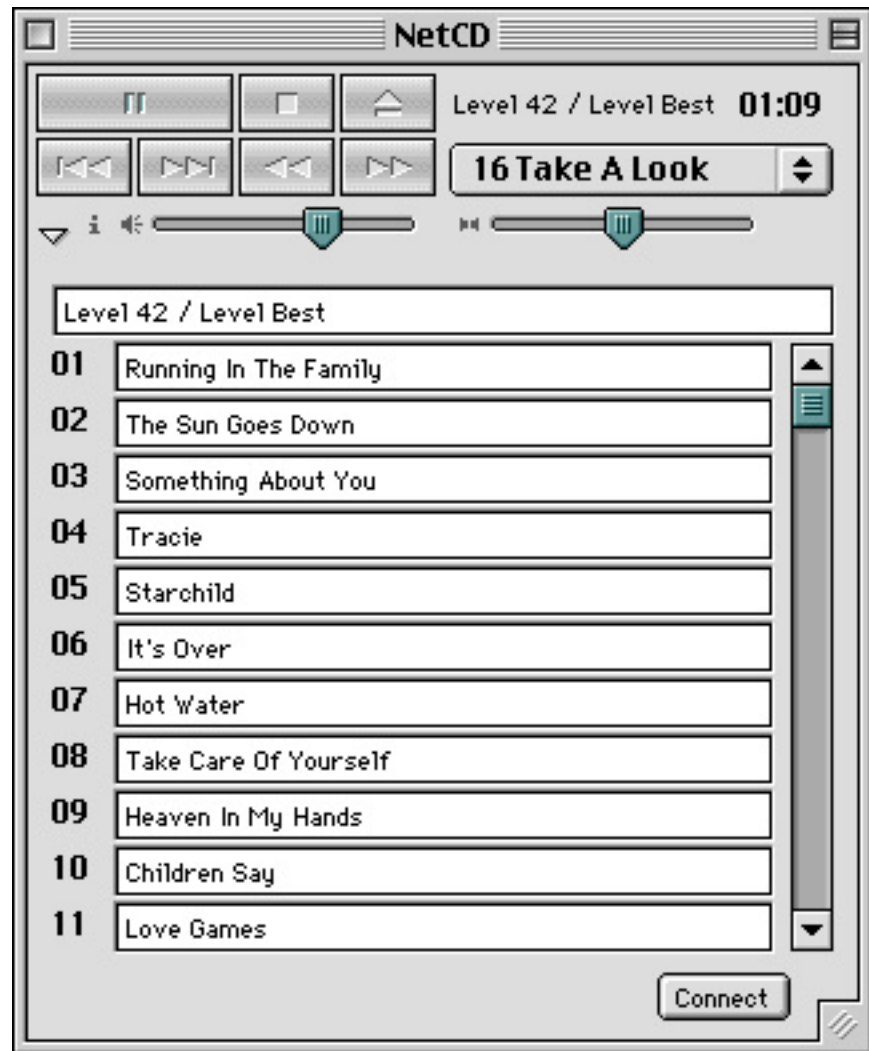


Figure 2: NetCD's Main Window.

CD Buttons. The seven buttons in the upper left hand corner of the window control the playback of the audio CD. Clockwise from the top left, they are:

*Play/Pause.* This button plays the CD. When the CD is playing, this button becomes the Pause button, which pauses the CD.

*Stop.* This button stops the CD playback.

*Eject.* This button ejects the CD from the CD-ROM drive. To open the CD-ROM tray when no disc is in the drive, press the eject button on the drive itself.

*Forward Scan.* Clicking and holding down this button moves forward rapidly through the disc.

*Backward Scan.* Clicking and holding down this button moves backward rapidly through the disc.

*Next Track.* This button begins playback at the beginning of the next track.

*Previous Track.* This button begins playback at the beginning of the previous track.

CD Title Field.	The title of the CD is displayed to the right of the CD buttons. If it is too long to be displayed, only the first part is shown, followed by ellipsis (...).
Track Popup Menu.	The tracks of the CD are listed both numerically and by title in the popup window below the disc name. When closed, this popup menu shows the number of the track currently playing. When you open the menu by clicking on it, the numbers and titles of all the tracks are displayed. The currently playing track is selected. To begin playback at a specific track, choose the track from this popup menu.
Time Display.	The time display is to the right of the CD Title Field. By default, the display shows the elapsed time, in minutes and seconds, for the current track. You can cycle through the display options by clicking on the time display. The display can also be set to show other information through the Display menu, which will be discussed later.
Disclosure Triangle.	The disclosure triangle, located beneath the CD buttons, toggles between compact view and expanded view. To switch views, click the button.
Information Button.	Click on the small “i” to the left of the volume slider to show or hide the extra information window. When there is extra information for the current disc, the information button is highlighted.
Volume Slider.	The volume slider appears to the right of the disclosure triangle. To control the volume of the audio CD playback, drag the slider tab. The audio CD volume is independent of the computer’s system volume. Clicking on the speaker icon to the left of the volume slider temporarily mutes the volume; click on the icon again to reset normal volume.
Panning Slider.	The panning slider appears to the right of the volume slider. To control the panning of the audio CD playback, drag the slider tab. Clicking on the panning icon to the left of the panning slider returns the panning to exact center.

- Title and Track Fields. In expanded view, the disc title and track titles are displayed in the edit fields in the middle of the window. These fields display the program information for the current CD and can be changed by the user. To move between the fields, press the tab key or the return key. You can use the standard edit functions (cut, copy, paste) in these fields. If there are more than eleven tracks on the CD, you can use the scroll bar to the right to view the titles of the other tracks. Clicking on the track number to the left of a field automatically starts playback at that track.
- The Connect Button. The connect button at the bottom of the window allows you to connect to the internet to retrieve CD information. While NetCD is connecting to a CDDB server, this button becomes the Cancel button, which, when clicked, will cancel the current internet connection. This button may be dimmed according to your connection preferences, which will be discussed later.
- The Resize Box. The resize box is located at the lower right-hand corner of the window. To change the width of the window, click on the resize box and drag it to the left or right. When you let go, the window and its controls change to the new width.

*NetCD's Menus*      Nearly all of NetCD's functions are available through the main window, but some of NetCD's features are available through the menus as well, which are explained below.

The Apple Menu.      In addition to the items you have placed in the Apple Menu Items folder, the Apple Menu contains two menu items:

*About NetCD.* This command displays a box describing NetCD.

*About CDDb.* This command displays a box describing the CDDb service.

The File Menu      The File Menu contains commands dealing with the CD database.

*Connect.* This command causes NetCD to connect to the CDDb to download information about the current disc.

*Submit Revision.* This command brings up the Submit Information dialog box to submit a revised entry to the CDDb. To submit a revision, first use "Connect" to download the current entry. Then make the appropriate changes and select "Submit Revision."

*Catalog Mode.* This command puts NetCD into Catalog Mode, which is described in further detail below. To return to normal mode, choose this menu item again to deselect it.

*Quit.* This command closes the NetCD program. Quitting the program does not stop the CD. You can also quit NetCD by clicking the main window's close box at the left end of the title bar.

The Edit Menu      The Edit Menu contains the standard Edit commands for the Macintosh. For more information on these commands, consult the documentation that came with your computer. The other commands available from the Edit menu are:

*Copy Current Track.* This command copies the name of the currently playing track to the clipboard.

*Copy All.* This command copies the name of the entire program of the current disc to the clipboard.

*Preferences.* This command displays the Preferences dialog box, where you can view and change your connection preferences.

The Disc Menu      The Disc Menu contains a few commands specific to NetCD:

*Play/Pause.* This command changes depending on whether the CD is playing or stopped. Its effect is the same as pressing the Play/Pause button.

*Stop.* This command has the same effect as pressing the Stop button.

*Eject.* This command has the same effect as pressing the Eject button.

*Display.* The Display submenu allows you to change the time display in the main window. The current choice is marked with a check mark.

*Show Disc Info.* This command displays the extra information window, which



displays any extended information about the current CD. At the bottom of the window is a popup menu from which you can choose the information you wish to view. Information downloaded from the CDDb is displayed in this window, and any changes or additions made are saved to your local CD database. When the extra information window is visible, the menu item switches to *Hide Disc Info*.

**Contextual Menus** In addition to the menus in the menubar, you can access a contextual menu at any time by holding the Control key and clicking the mouse in the NetCD main window. From the contextual menu you can change the time display or access the connection preferences.

*Catalog Mode* NetCD can be used to quickly catalog your entire CD collection using the CDDb. When you choose “Catalog Mode” from the File menu, NetCD automatically searches the CDDb for information on the current disc and downloads it. NetCD then ejects the CD and waits for the next disc.

To turn off Catalog Mode, choose “Catalog Mode” from the File menu to deselect it.

### *CDDB Submission*

If NetCD searches the internet database for your CD and doesn't find a match, it will give you the option of sending information about the CD to add to the internet database. All information in the CDDB has been entered by users like you. The CDDB submission can include all of the following information:

- *Disc Artist and Title.* These two items are entered into separate fields in the Submit Information dialog box, and are displayed in the main CD window separated by a slash ("They Might Be Giants / Factory Showroom", for example).
- *Track Titles.*
- *Extended Information.* This is the information made visible by selecting "Show Information" from the NetCD menu.

If you do not wish to submit CD information to the CDDB, click the Cancel button in the Submit Information dialog box. If you do wish to send information to the CDDB, enter the information into the fields and click the Send button. NetCD will submit the information to the server. If it is rejected for some reason, you will receive an e-mail message explaining why.

Please remember that the CDDB is a free service provided to everyone. With this in mind, please observe the following guidelines when submitting CD information to the database:

- Do not submit information for homemade compilation CDs or other unique discs. Since no one else is able to take advantage of this information, these submissions simply clutter the database needlessly.
- Feel free to use accented characters where appropriate. For instance: "André Previn and Orchestre Révolutionnaire et Romantique / The Music of Henryk Górecki and Arvo Pärt" (Though I'm quite certain we won't be seeing this CD anytime soon...)
- Take advantage of the extra information fields. Some users use this feature to include lyrics, libretti, performance information or other pertinent data. Please avoid personal opinions or experience, however.
- Make sure each track has a title. If the CD does not list a title for the track and you do not know it, use "[Untitled]."
- If the CD has more than one artist, use the phrase "Various Artists" for the artist field and include the artist for each track in the extra information field for that track.
- Use appropriate capitalization. In most cases, the capitalization used on the CD case is fine. Do not use all capitals, however; if the CD case does, use proper song title capitalization (which means capitalizing every word, as in "I Wouldn't Normally Do This Kind Of Thing").
- Proofread your submission for spelling errors and correct track numbers.

*Jacket Notes*     I am indebted to all the individuals who made this program possible, most especially Andrew Barry, Geoff Perlman, Jason Parsley, Ti Kan, Steve Scherf, Steven Riggins, Guillaume Grenier and Bob Blank.

NetCD is freeware and may be distributed freely as long as all documentation is included. NetCD may not be sold for profit under any circumstances. Toby W. Rush assumes no responsibility for any damage or loss of data incurred by this program or its use.